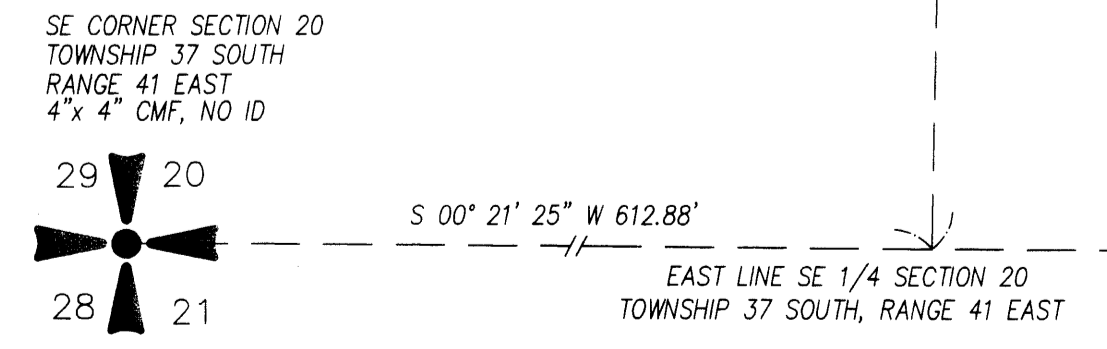
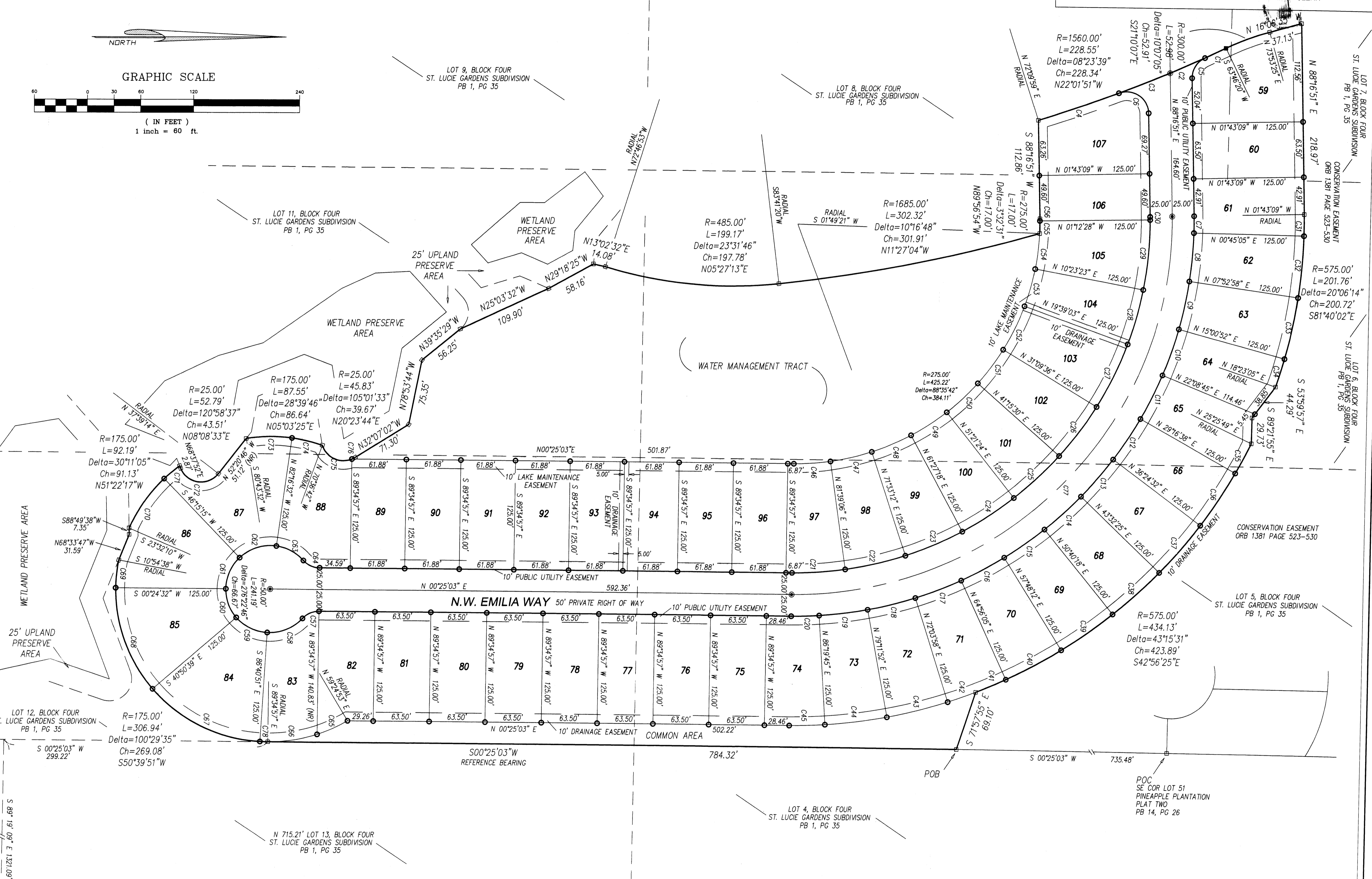
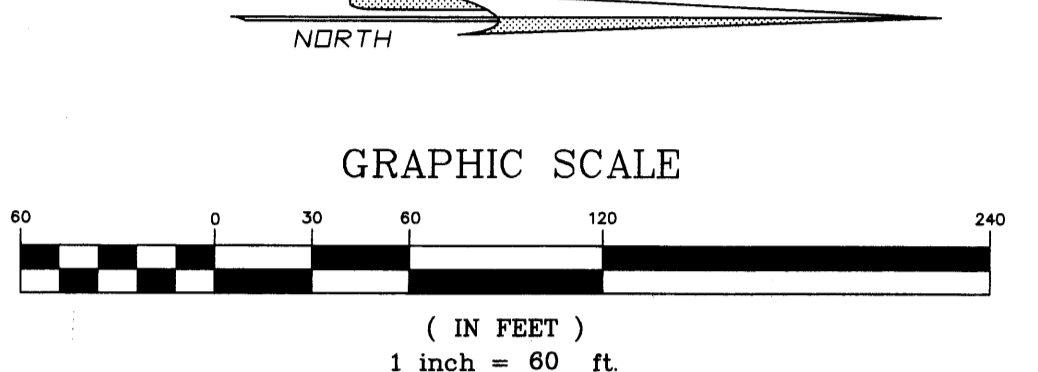


CURVE	RADIUS	DELTA	ARC	CHORD	BEARING
C1	1560.00'	0°58'13"	26.42'	26.42'	N25°44'34"W
C2	1560.00'	1°35'37"	43.39'	43.39'	N24°27'39"W
C3	1560.00'	2°17'41"	62.48'	62.48'	N22°30'59"W
C4	1560.00'	3°32'7"	96.26'	96.24'	N19°36'05"W
C5	25.00'	66°27'42"	29.00'	27.40'	S88°29'18"E
C6	25.00'	109°38'59"	47.84'	40.87'	S33°27'21"W
C7	450.00'	2°28'14"	19.40'	19.40'	S89°30'58"W
C8	450.00'	7°7'53"	56.01'	55.97'	N85°40'58"W
C9	450.00'	7°7'53"	56.01'	55.97'	N78°33'05"W
C10	450.00'	7°7'53"	56.01'	55.97'	N71°25'12"W
C11	450.00'	7°7'53"	56.01'	55.97'	N64°17'18"W
C12	450.00'	7°7'53"	56.01'	55.97'	N57°09'25"W
C13	450.00'	7°7'53"	56.01'	55.97'	N50°01'32"W
C14	450.00'	7°7'53"	56.01'	55.97'	N42°53'38"W
C15	450.00'	7°7'53"	56.01'	55.97'	N35°45'45"W
C16	450.00'	7°7'53"	56.01'	55.97'	N28°37'52"W
C17	450.00'	7°7'53"	56.01'	55.97'	N21°29'58"W
C18	450.00'	7°7'53"	56.01'	55.97'	N14°22'05"W
C19	450.00'	7°7'53"	56.01'	55.97'	N07°14'12"W
C20	450.00'	4°5'18"	32.11'	32.10'	N01°37'36"W
C21	400.00'	8°45'57"	61.20'	61.14'	N03°57'55"W
C22	400.00'	10°5'54"	70.50'	70.41'	N13°23'51"W
C23	400.00'	10°5'54"	70.50'	70.41'	N23°29'45"W
C24	400.00'	10°5'54"	70.50'	70.41'	N33°35'39"W
C25	400.00'	10°5'54"	70.50'	70.41'	N43°41'33"W
C26	400.00'	10°5'54"	70.50'	70.41'	N53°47'27"W
C27	400.00'	11°30'32"	80.35'	80.21'	N64°53'40"W
C28	400.00'	9°15'40"	64.65'	64.58'	N74°58'47"W
C29	400.00'	11°35'51"	80.97'	80.83'	N85°24'32"W
C30	400.00'	0°30'41"	3.57'	3.57'	S88°32'11"W
C31	575.00'	2°28'14"	24.79'	24.79'	S89°30'58"W
C32	575.00'	7°7'53"	71.57'	71.52'	N85°40'58"W
C33	575.00'	7°7'53"	71.57'	71.52'	N78°33'05"W
C34	575.00'	3°22'13"	33.82'	33.82'	N73°18'02"W
C35	575.00'	3°50'49"	38.61'	38.60'	N62°38'46"W
C36	575.00'	7°7'53"	71.57'	71.52'	N57°09'25"W
C37	575.00'	7°7'53"	71.57'	71.52'	N50°01'32"W
C38	575.00'	7°7'53"	71.57'	71.52'	N42°53'38"W
C39	575.00'	7°7'53"	71.57'	71.52'	N35°45'45"W
C40	575.00'	7°7'53"	71.57'	71.52'	N28°37'52"W
C41	575.00'	3°45'15"	37.68'	37.67'	N23°11'17"W
C42	575.00'	3°22'38"	33.89'	33.89'	N19°37'21"W
C43	575.00'	7°7'53"	71.57'	71.52'	N14°22'05"W
C44	575.00'	7°7'53"	71.57'	71.52'	N07°14'12"W
C45	575.00'	4°5'18"	41.03'	41.02'	N01°37'36"W
C46	275.00'	8°45'57"	42.07'	42.03'	N03°57'55"W
C47	275.00'	10°5'54"	48.47'	48.41'	N13°23'51"W
C48	275.00'	10°5'54"	48.47'	48.41'	N23°29'45"W
C49	275.00'	10°5'54"	48.47'	48.41'	N33°35'39"W
C50	275.00'	10°5'54"	48.47'	48.41'	N43°41'33"W
C51	275.00'	10°5'54"	48.47'	48.41'	N53°47'27"W
C52	275.00'	11°30'32"	55.24'	55.15'	N64°53'40"W
C53	275.00'	0°15'40"	44.45'	44.40'	N74°58'47"W
C54	275.00'	8°34'02"	41.12'	41.08'	N83°53'38"W
C55	275.00'	3°01'49"	14.54'	14.54'	N89°11'33"W
C56	275.00'	0°30'41"	2.45'	2.45'	S88°32'11"W
C57	25.00'	48°11'23"	21.03'	20.41'	S23°40'38"E
C58	50.00'	51°5'30"	44.59'	43.12'	N22°13'35"W
C59	50.00'	41°15'11"	36.00'	35.23'	N69°46'57"E
C60	50.00'	41°15'11"	36.00'	35.23'	N69°46'57"E
C61	50.00'	41°15'11"	36.00'	35.23'	N69°46'57"E
C62	50.00'	51°28'13"	44.92'	43.42'	S18°00'39"E
C63	50.00'	40°52'58"	35.68'	34.92'	S28°09'57"E
C64	25.00'	48°11'23"	21.03'	20.41'	N24°23'44"E
C65	175.00'	12°22'26"	37.79'	37.72'	N24°23'54"W
C66	175.00'	18°37'44"	56.90'	56.65'	S08°53'49"W
C67	175.00'	45°50'12"	140.00'	136.30'	S26°14'15"W
C68	175.00'	41°15'11"	126.00'	123.30'	S69°46'57"W
C69	175.00'	10°30'06"	32.08'	32.03'	N84°20'25"W
C70	175.00'	22°43'05"	69.39'	68.93'	N55°06'17"W
C71	175.00'	7°28'00"	22.81'	22.79'	N40°00'45"W
C72	25.00'	120°58'37"	52.79'	43.51'	N08°08'33"E
C73	175.00'	16°59'56"	51.92'	51.73'	N00°46'30"W
C74	175.00'	11°39'50"	35.63'	35.56'	N13°33'23"E
C75	25.00'	95°28'13"	41.66'	37.00'	N25°10'24"E
C76	25.00'	9°33'20"	4.17'	4.16'	N27°20'23"W
C77	425.00'	92°8'12"	683.44'	612.14'	N45°39'03"W
C78	175.00'	2°54'6"	8.86'	8.86'	N01°52'06"E

A PLAT OF  
**PINEAPPLE PLANTATION PLAT SIX**  
 BEING A REPLAT OF A PORTION OF SECTION 20, TOWNSHIP 37 SOUTH,  
 RANGE 41 EAST, ST. LUCIE GARDENS AS RECORDED IN PLAT BOOK 1, PAGE 35  
 OF THE PUBLIC RECORDS OF ST. LUCIE COUNTY (NOW MARTIN COUNTY), FLORIDA.

CLERKS RECORDING CERTIFICATE  
 I, MARSHA STILLER, CLERK OF THE CIRCUIT COURT OF MARTIN COUNTY, FLORIDA, HEREBY CERTIFY THAT THIS PLAT WAS FILED FOR RECORD IN PLAT BOOK 14, PAGE 73, MARTIN COUNTY, FLORIDA, PUBLIC RECORDS, THIS 27 DAY OF AUG, 1999.  
 Marsha Stiller  
 MARSHA STILLER, CLERK OF THE CIRCUIT COURT MARTIN COUNTY, FLORIDA  
 FILE NUMBER 380001 BY [Signature] DEPUTY CLERK



**LEGEND**  
 □ = SET 4"x4" CONCRETE MONUMENT STAMPED PRM PLS 5363  
 ■ = FOUND 4"x4" CONCRETE MONUMENT STAMPED PRM PLS 5363  
 ● = SET NAIL & DISK STAMPED PCP PLS 5363  
 ○ = SET 5/8" IRON ROD STAMPED GORDON & ASSOC.  
 (NR) = NON RADIAL  
 NOTE: ALL LOTS ARE RADIAL UNLESS OTHERWISE NOTED.

"NOTICE: This plat, as recorded in its graphic form, is the official depiction of the subdivided lands described herein and will in no circumstances be supplanted in authority by any other graphic or digital form of the plat. There may be additional restrictions that are not recorded on this plat that may be found in the public records of this county."

**Gordon & Associates**  
**Land Surveyors, Inc.**  
 L.B. No.6446  
 A. EARL GORDON, JR, PSM No. LS 2866  
 EARL K. GORDON, PSM No. 5363  
 219 Forrest Ave. Cocoa, FL 32922  
 (407) 639-8171 FAX (407) 639-8177